



**WORLD'S BEST
ALLOY BULLBARS**

East Coast Bullbars (ECB Pty Ltd)

Tel: 07 3897 5700

Fax: 07 3283 1168

ecb@ecb.com.au www.ecb.com.au

29 Snook St
Clontarf QLD 4019
Australia

Po Box 122
Margate QLD 4019
Australia

BV03SY

REPLACES: 12.08.10
REVISED: 16.10.19

FITTING INSTRUCTIONS

VOLKSWAGON TRANSPORTER 01/10-12/16 BIG TUBE™ PROTECTION BAR VEHICLE FRONTAL PROTECTION SYSTEM (VFPS) FOR AIR BAG & ADR COMPLIANT VEHICLES

Check installation hardware before commencing.

Special Tools: T25 and T30 Torx bit and associated driver

Air or electrically driven ratchet

Straight sided “g” clamps or medium “c” vice grips

1. Open bonnet.
2. Remove four plastic push pull clips from grille. Slide hand in behind grille onto lower fixings, pinch lower fixings and remove grille from bumper.
3. Remove top and bottom bumper side panels from bumper using a small flat blade screwdriver. Slide screwdriver between top of side panel and bumper to release clips. Repeat for bottom of side panel and bumper. Gently pull from centre to assist in removal. **See figure 1.**
4. Disconnect passenger’s side headlight, radiator bottle, and micro switch from under bonnet lock. To remove micro switch, gently lift locking tab on underside of switch and carefully lift up toward drivers’ side of vehicle at 45 degrees. **See figure 2. Caution:** Plastic of micro switch is easily broken. Care needs to be taken upon removal and refitting. Feed wiring back into bumper cavity. Wiring harness is removed with bumper.
5. Remove five 13mm head bolts from centre under body guard. Unclip from plastic guard hanger and remove. From rear of bumper remove three T30 Torx head bolts.
6. Disassemble front of inner guard removing three T25 Torx head screws from underside, two T25 Torx head screws from front of wheel arch (per side). Peel back inner guard to access rear flat edge of plastic bumper.
7. Remove two 10mm head bolts from inside of guard on rear flat edge of plastic bumper (per side) and one T25 head screw from rear corner of plastic bumper wing. On driver’s side of vehicle, disconnect wiring harness hanging under horn. **See figure 3.** Wiring harness is removed with bumper.
8. Where bumper side panels are removed, remove two T30 Torx head screws (per side) and one (per side) from lower corners of grille. Carefully remove bumper cover. **See figure 4.**
9. Remove T25 Torx Screw from underside of lower mount on radiator support. Lower radiator mounts are part of the bumper cover support on this model and as such are removed and replaced by ECB steel mounts.
10. Using medium “c” clamp, vice grip or similar, clamp top radiator mount to raise radiators from lower mounts and support when bumper cover support is removed. **See figure 5. Caution:** Radiators need to be supported upon removal of bumper support. Failure to do this means radiators will drop from the top mounts making refitting difficult.
11. Remove three T25 Torx plastic clips from front of bumper support. Remove bumper cover support. Five 13mm head bolts (per side).



**WORLD'S BEST
ALLOY BULLBARS**

East Coast Bullbars (ECB Pty Ltd)

Tel: 07 3897 5700

Fax: 07 3283 1168

ecb@ecb.com.au www.ecb.com.au

29 Snook St
Clontarf QLD 4019
Australia

Po Box 122
Margate QLD 4019
Australia

12. Fit ECB steel chassis support brackets (supplied) to front of chassis ends using two M8 x 1.25 x 25mm bolts, spring washers and flat washers from underside, flat washers and nuts (supplied) on inside of chassis rails. **See figure 6 Finger tighten only. Warning:** Plates must be fitted to support front of chassis rail. If not fitted, damage to vehicle may occur. **Caution:** Bolts, spring washers and a flat washer (per bolt) must be to underside of chassis rail.
13. Install ECB bumper support (supplied) to front of chassis rail using lower three M8 x 40 x 1.25 bolts, spring washers and 3/8 flat washers for front of mount and one M8 x 35 x 1.25, spring washers and 3/8 flat washers for top plastic radiator support mount (per side) (supplied), 1/2 x 1 1/2 bolt, flat washers, spring washers and nuts (supplied) to outer middle hole of mount. **See figure 7.** Remove radiator support rubbers from vehicle mount and fit to ECB Steel radiator mounts. Install using one M8 x 40 bolt, spring washer and 3/8 flat washer for upper hole and one M8 x 40 bolt, 3/8 flat washers, spring washers and nut (supplied) for lower hole. Centre to vehicle and **tighten all bolts. See figure 8.** Lower radiators back to original position and refit T25 Torx screw to underside of mount.
14. Fit M8 nuts, spring washers and flat washers (supplied) to rear of chassis mount bolts. Ensure bolt is through chassis support bracket. Hold front of bolt to tighten nut, spring washer and flat washer to rear. **Tighten all bolts. See figure 9.**
15. Install ECB steel top bumper support mounts (supplied) to top holes of chassis mount using two 3/8 x 1 1/2 bolts, flat washers, spring washers and nuts (supplied). Align top mounts holes to sit centrally to holes in alloy mount on rear of ECB protection bar. **Tighten all bolts. See figure 10.**
16. Remove fog light trim from plastic bumper cover. Trim inner section from bumper cover. **See figure 11.**
17. Splice ECB wiring harness into original vehicle harness behind headlights. On passengers side, harness is attached to bumper cover and will need to be reconnected under drivers side of vehicle before wiring.
18. Trim outside openings from top grille panel to allow access for top of chassis mount to protrude. **See figure 12.**
19. Refit bumper cover to vehicle as per reverse of steps 2 to 10. Ensure ECB wiring harness hangs through front of bumper cover.
20. Fit ECB LED indicator / park lights (supplied) into protection bar as per instructions supplied with the LED indicator kit. **NOTE: Ensure park light is to outside. See figure 13.**
21. Attach 6mm clip lock trim (supplied) to top of ECB protection bar. **NOTE:** Trim off lower edge on an angle so trim will sit flush with end of protection bar. **See figures 14, 15 and 16.**
22. Measure from inner fog light trim opening to ECB steel chassis mount. Transfer measurements to plastic fog light trim and allow 15mm opening in trim for chassis mount to protrude. Cut trim to suit. Refit trim to bumper cover. **See figure 17.**
23. Attach ECB protection bar to inside of steel chassis mount using four 1/2 x 1 1/2 bolts, flat washers, spring washers and nuts (per side) (supplied). For ease of fitment, place bolt heads to inside of mount. Caution must be taken as skirts ends and rear of wings are close to plastic bumper. **Finger tighten only.**
24. Align ECB protection bar to vehicle. **Tighten all bolts.** Bolts are tightened through vent openings in front of bar. Caution is required so protection bar finish is not damaged. **See figures 18 and 19.**
25. Connect and test indicator/ park lights for correct operation.



**WORLD'S BEST
ALLOY BULLBARS**

East Coast Bullbars (ECB Pty Ltd)

Tel: 07 3897 5700

Fax: 07 3283 1168

ecb@ecb.com.au www.ecb.com.au

29 Snook St
Clontarf QLD 4019
Australia

Po Box 122
Margate QLD 4019
Australia

ENSURE NUMBER PLATE IS CLEARLY VISABLE

Note: When fitting/refitting the licence plate to the vehicle, ensure there is no obstruction to licence plate vision in accordance with local authorities. If required relocate licence plate to an alternate location.

Further VFPS Notes:

- Do not attach VFPS to the vehicle using anchorages not intended for this purpose (e.g. engine mounting bolts).
- Do not use this product for any vehicle make or model, other than those specified by the VFPS manufacturer.
- Do not remove the plaque or label from the VFPS.
- Do not modify the structure of the VFPS in any way.
- No accessory or fitment should project forward of the VFPS forward profile.
- ENSURE THESE INSTRUCTIONS ARE LEFT WITH VEHICLE OWNER AND/OR OPERATOR.**

IMPORTANT INFORMATION

Periodically check bolts and nuts for correct tightness, especially if travelling on rough roads

FITTING KIT

1 – ECB steel bumper support	4 – 3/8 spring washers
1 – Pair ECB steel chassis support brackets	4 – 3/8 nuts
1 – Pair ECB steel bullbar supports	10 – ½ x 1 ½ bolts
1 – Pair ECB steel radiator mounts	20 – ½ flat washers
4 – M8 x 1.25 x 25 bolts	10 – ½ spring washers
2 – M8 x 1.25 x 30 bolts	10 – ½ nuts
10 – M8 x 1.25 x 40 bolts	1 – ECB LED Indicator / Park light kit
8 – M8 flat washers	2 – 200mm length 2 core wire
22 – M8 spring washers	6 – Cable locks
12 – M8 nuts	4 – ECB fog light trims
4 – 3/8 x 1 ½ bolts	1 – 2400mm length 6mm clip lock trim
28 – 3/8 flat washers	



Figure 1: Bumper side panel holding clips.
Passenger's side shown

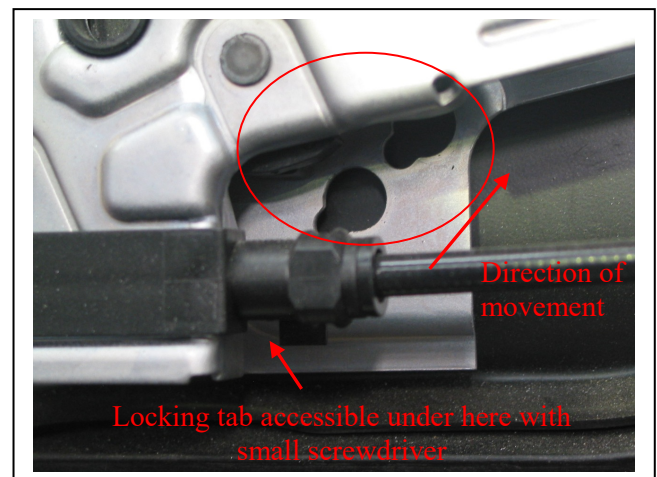


Figure 2: Locking area with micro switch removed. Slots are mounting points.



**WORLD'S BEST
ALLOY BULLBARS**

East Coast Bullbars (ECB Pty Ltd)

Tel: 07 3897 5700

Fax: 07 3283 1168

ecb@ecb.com.au www.ecb.com.au

29 Snook St
Clontarf QLD 4019
Australia

Po Box 122
Margate QLD 4019
Australia



Figure 3: Wiring harness to be disconnected. Harness is removed with plastic bumper.



Figure 4: Remove two T25 Torx screws. Photo shown with cut outs for ease of view.



Figure 5: Supporting radiators using sliding “c” clamps under top mount. Note position of clamp

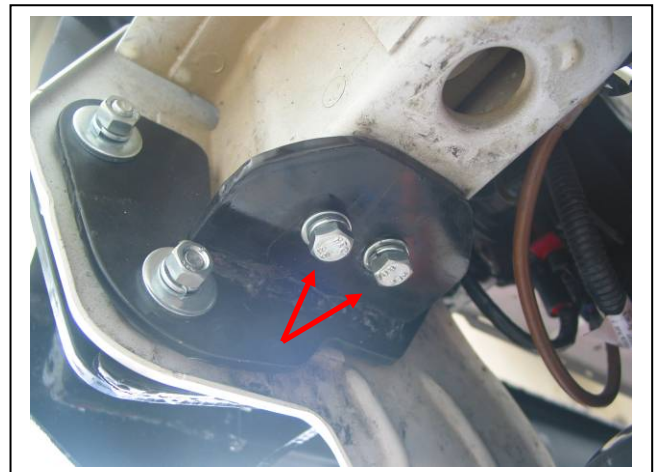


Figure 6: Chassis support attached to front of chassis. Passengers side shown.

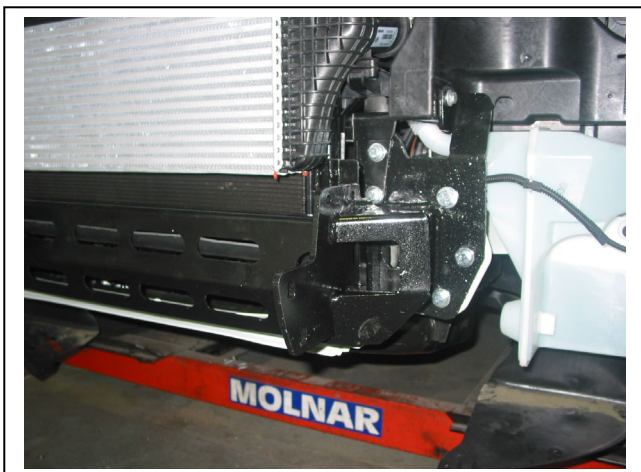


Figure 7: Bumper support attached to vehicle. Passengers side shown.

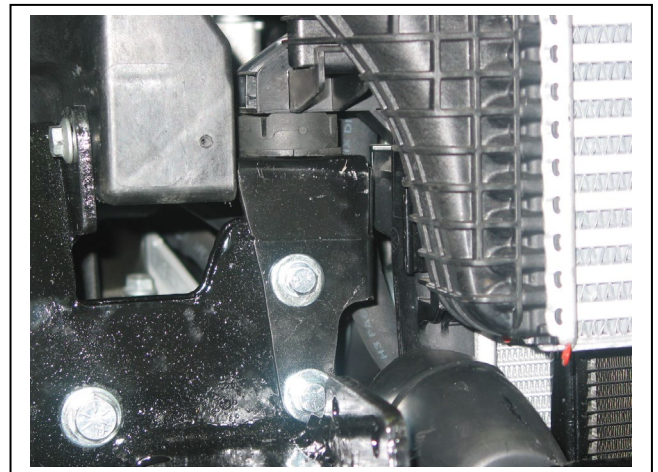


Figure 8: Drivers side radiator mount fitted.



**WORLD'S BEST
ALLOY BULLBARS**

East Coast Bullbars (ECB Pty Ltd)

Tel: 07 3897 5700

Fax: 07 3283 1168

ecb@ecb.com.au www.ecb.com.au

29 Snook St
Clontarf QLD 4019
Australia

Po Box 122
Margate QLD 4019
Australia

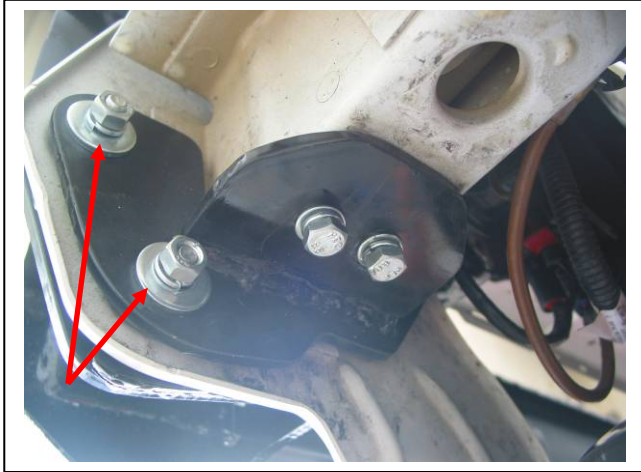


Figure 9: Nuts to rear of chassis mount.

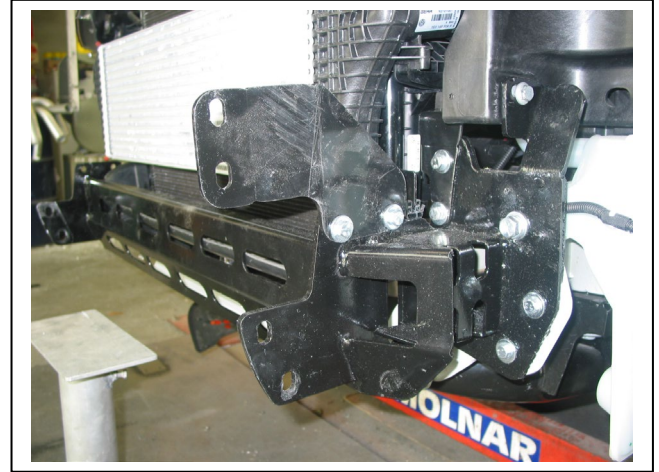


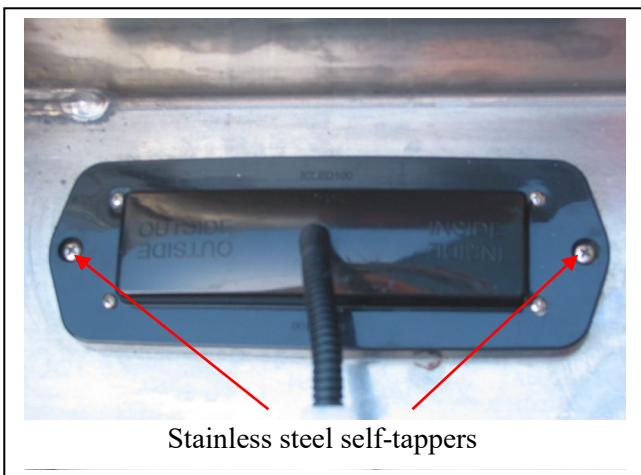
Figure 10: Top bumper support fitted to passengers side chassis mount.



Figure 11: Remove marked section from plastic bumper cover.

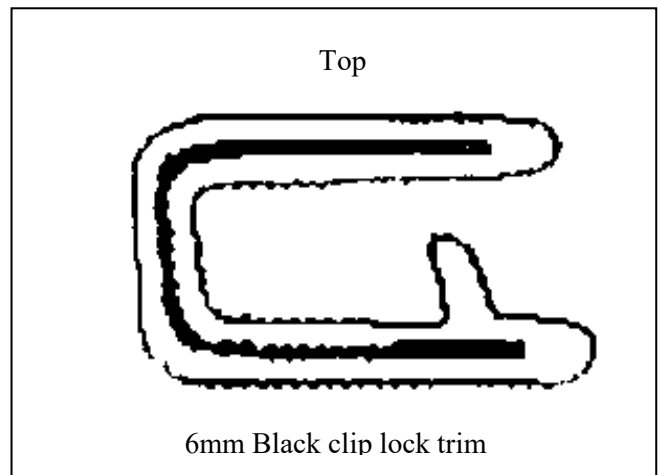


Figure 12: Remove outer sections centre grille. Remove lower section to house top mount.



Stainless steel self-tappers

Figure 13



6mm Black clip lock trim

Figure 14



**WORLD'S BEST
ALLOY BULLBARS**

East Coast Bullbars (ECB Pty Ltd)

Tel: 07 3897 5700

Fax: 07 3283 1168

ecb@ecb.com.au www.ecb.com.au

29 Snook St
Clontarf QLD 4019
Australia

Po Box 122
Margate QLD 4019
Australia

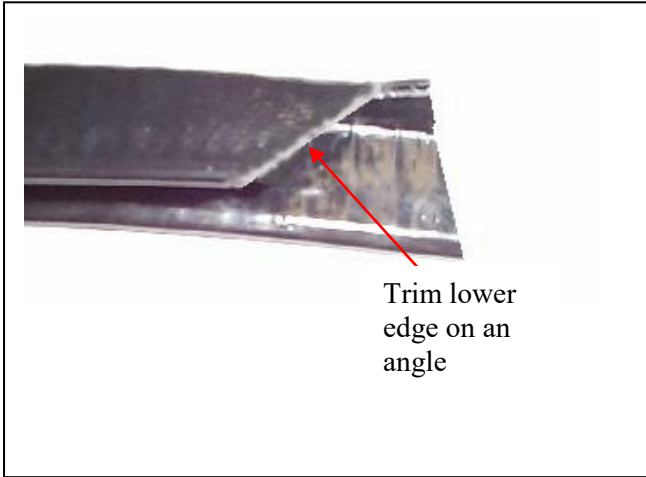


Figure 15

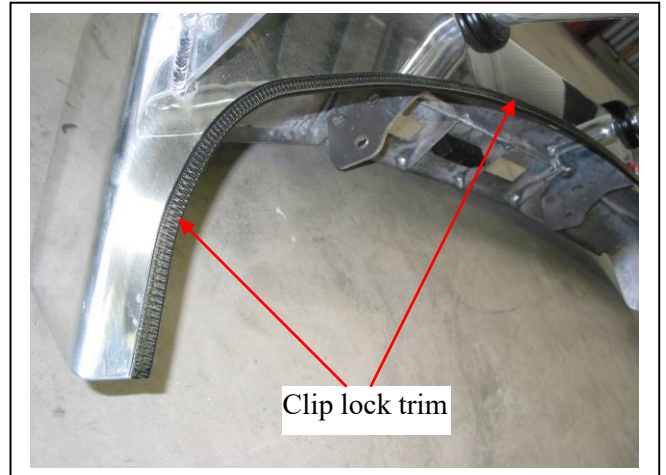


Figure 16



Figure 17: Passengers side of sample vehicle.



Figure 18: Side view



Figure 19: Front view



**WORLD'S BEST
ALLOY BULLBARS**

East Coast Bullbars (ECB Pty Ltd)

Tel: 07 3897 5700

Fax: 07 3283 1168

ecb@ecb.com.au www.ecb.com.au

29 Snook St
Clontarf QLD 4019
Australia

Po Box 122
Margate QLD 4019
Australia

We value your comments

Dear Fitter,

ECB would like to know how you went with the installation of this product. We value your comment and may need to contact you to clarify some details so please complete your contact details clearly.

We would appreciate if you could complete as many of the following details as possible.

Your Name:	Your contact No.
Product Part No.	Product Invoice No.
Product Description:	Make, model, and year of vehicle:
Product Work Order No.	Company your from/Company product purchased from:

Date of Fitment: ___ / ___ / ___

Was the fitting hardware supplied complete?

Yes

No

If no what was not supplied

Did the installation go well?

Yes

No

Please provide comments

Please draw diagrams if you need to.

Post to
Reply Paid 122
PO Box 122
Margate QLD 4019

Fax to
(07) 3283 1168



**WORLD'S BEST
ALLOY BULLBARS**

East Coast Bullbars (ECB Pty Ltd)

Tel: 07 3897 5700

Fax: 07 3283 1168

ecb@ecb.com.au www.ecb.com.au

29 Snook St
Clontarf QLD 4019
Australia

Po Box 122
Margate QLD 4019
Australia



WORLD'S BEST
ALLOY BULLBARS

East Coast Bullbars (ECB Pty Ltd)

Tel: 07 3897 5700

Fax: 07 3283 1168

ecb@ecb.com.au www.ecb.com.au

29 Snook St
Clontarf QLD 4019
Australia

Po Box 122
Margate QLD 4019
Australia

DESPATCH CHECKLIST BV03SY

Work Order #	
Finish:	
Transport:	
Due Date:	

- 1 – Steel bumper support
- 1 – Pair steel chassis support brackets.
- 2 – Pair steel bullbar support brackets.
- 2 – Pair steel radiator mounts
- 1 – Bolt Kit.
- 1 – ECB LED Indicator / Park light kit.
- 2 – 200mm lengths 2-core wire.
- 1 – 2400mm length 6mm clip lock
- 2 – ECB Overrides (**fitted to bar**)
- 4 – Fog light trims (**fitted to bar**)
- 3 – 6mm Air vents (**fitted to bar**)

**See other side off
this page for
photos of all
mounts**

All parts checked and completed by:

Nut and bolts: _____ Date / /

Order control: _____ Date / /

Final wrap check: _____ Date / /



**WORLD'S BEST
ALLOY BULLBARS**

East Coast Bullbars (ECB Pty Ltd)

Tel: 07 3897 5700

Fax: 07 3283 1168

ecb@ecb.com.au www.ecb.com.au

29 Snook St
Clontarf QLD 4019
Australia

Po Box 122
Margate QLD 4019
Australia

